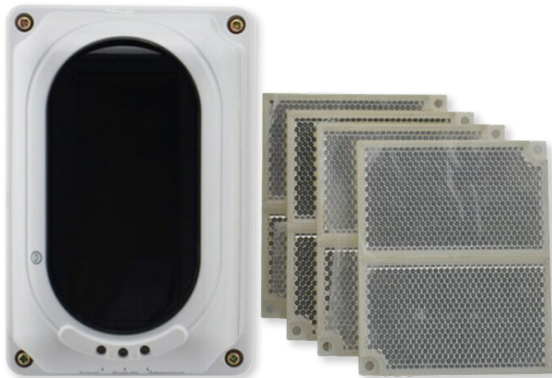




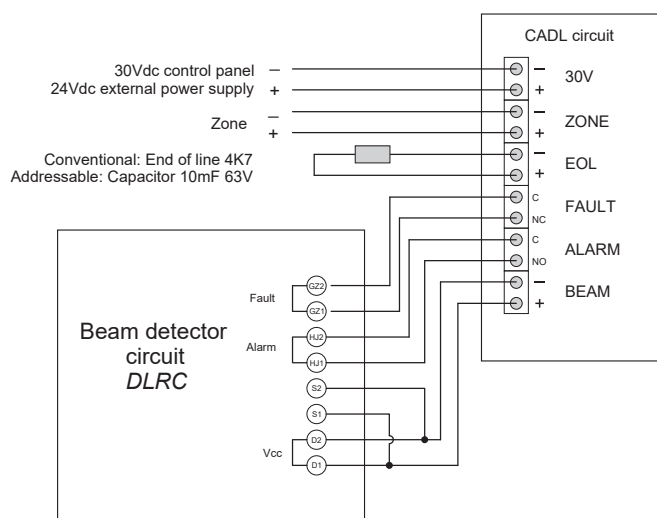
Smoke beam detector DLRC



Optical smoke beam detectors for fire detection system consisting in a system of emitting/receiving an optical beam of infra-red light.

The installation of these detectors is ideal for large premises or for premises with very high ceilings.

The detector has a range of 8 to 100m maximum separation. It is powered from the fire control panel or an external power supply. It has an alarm and fault output connected to the zone.



DLRC connection diagram

TECHNICAL FEATURES	
	<i>DLRC</i>
Supply	20-28Vdc
Standby consumption	23mA
Alarm consumption	33mA
Max. detector misalignment	± 0,4°
Max. reflector misalignment	-
Relais output	2A at 30Vdc
Temperature	-10°C to +55°C
Protection	IP30 (IP66 with silicone seal)
Standard	EN 54-12